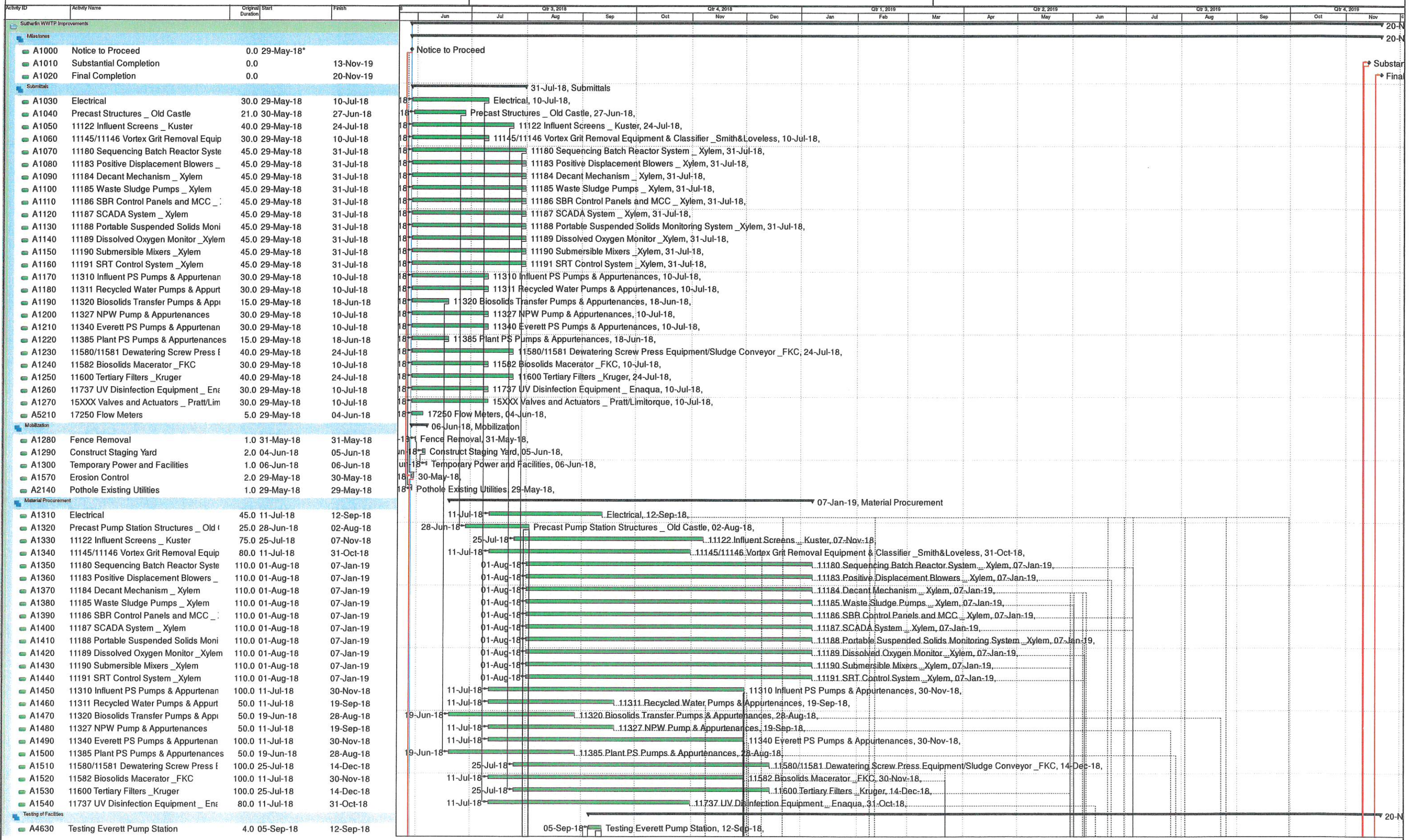


Sutherlin WWTP Improvements

15-May-18



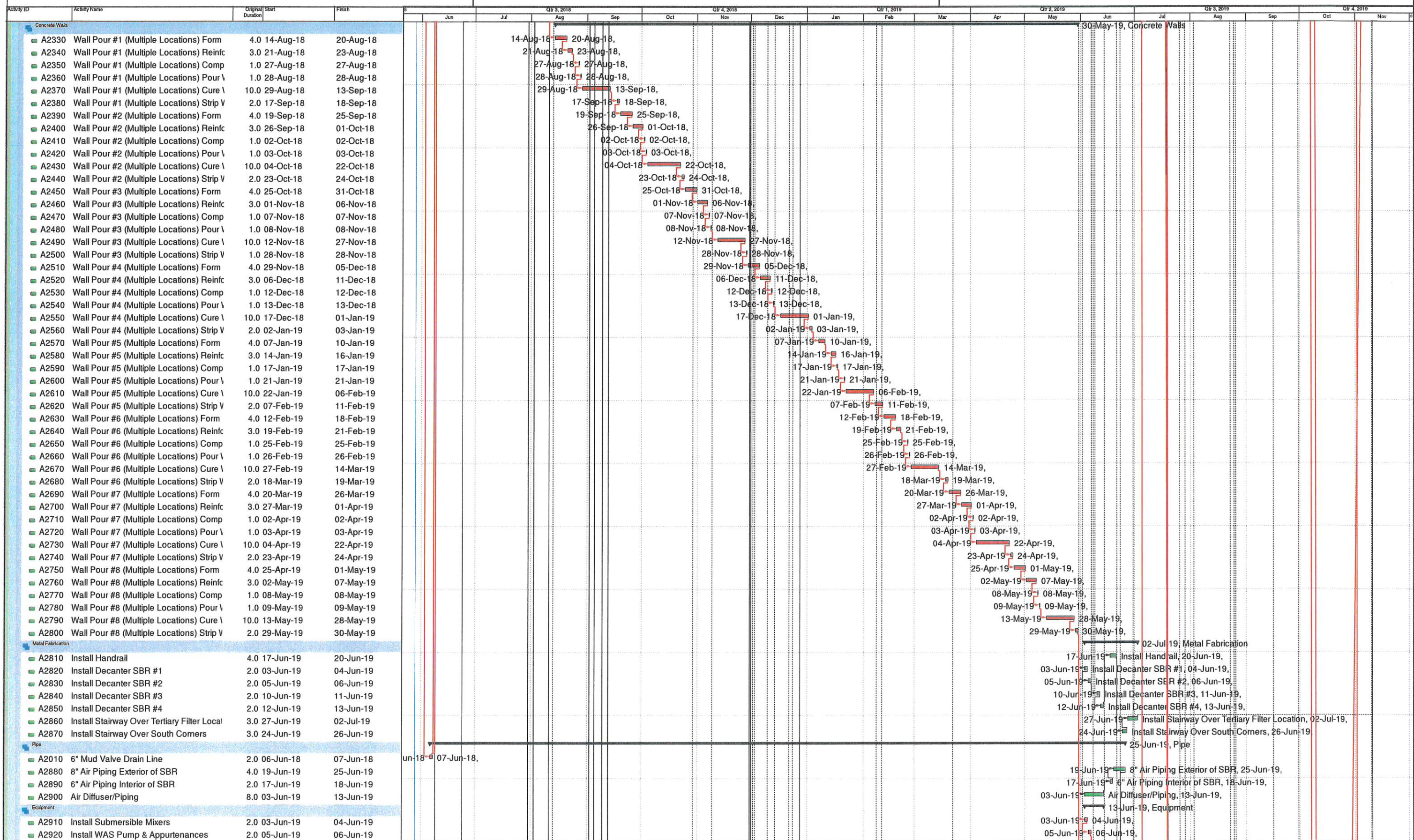
Sutherlin WWTP Improvements

15-May-18

Activity ID	Activity Name	Original Duration	Start	Finish	Jun	Jul	Aug	Sep	Oct	Nov	Dec	Jan	Feb	Mar	Apr	May	Jun	Jul	Aug	Sep	Oct	Nov
A4820	Testing Influent Pump Station	4.0	31-Dec-18	03-Jan-19							31-Dec-18											
A5110	SBR Testing (minimum 8 days for accep	8.0	08-Jul-19	18-Jul-19														08-Jul-19	18-Jul-19			
A5240	Punchlist Work	4.0	14-Nov-19	20-Nov-19																	14-Nov-19	20-Nov-19
Site Work																						
Sitework - Precast Structures																						
A1600	Catch Basin Sta 1+79 and Treatment SI	0.5	15-Oct-19	15-Oct-19																	15-Oct-19	15-Oct-19
A1620	Catch Basin Sta 6+90 on Entrance Road	0.5	19-Jul-18	19-Jul-18				19-Jul-18														
A1640	48" MH #12	1.0	17-Jul-18	17-Jul-18				17-Jul-18														
A1650	60" MH #3 Sta 0+21	1.0	02-Jul-18	02-Jul-18				02-Jul-18														
A1660	Catch Basin #10	0.5	23-Jul-18	23-Jul-18				23-Jul-18														
A1670	48" MH #4 Sta 0+97	1.0	04-Jul-18	04-Jul-18				04-Jul-18														
A1680	48" MH #5 Sta 1+55	1.0	09-Jul-18	09-Jul-18				09-Jul-18														
A1690	48" MH #6 Sta 1+83	1.0	11-Jul-18	11-Jul-18				11-Jul-18														
A1740	48" MH #7 Sta 2+63	1.0	16-Jul-18	16-Jul-18				16-Jul-18														
A1750	48" MH #9 West of MH #5	1.0	12-Jul-18	12-Jul-18				12-Jul-18														
A1760	Catch Basin #11	0.5	24-Jul-18	24-Jul-18				24-Jul-18														
Sitework - Pipe																						
A1630	12" Drain Line from CB 6+90 to 48" MH	1.0	18-Jul-18	18-Jul-18				18-Jul-18														
A1700	8" Drain Line from MH #3 to Catch Basin	0.5	19-Jul-18	19-Jul-18				19-Jul-18														
A1710	18" Drain Line from MH #4 Sta 0+97 to I	1.0	03-Jul-18	03-Jul-18				03-Jul-18														
A1720	18" Drain Line from MH #5 Sta 1+55 to I	1.0	05-Jul-18	05-Jul-18				05-Jul-18														
A1730	12" Drain Line from MH #6 Sta 1+83 to I	1.0	10-Jul-18	10-Jul-18				10-Jul-18														
A1770	8" Drain Line from MH #7 Sta 2+63 to M	1.0	12-Jul-18	12-Jul-18				12-Jul-18														
A1780	6" Drain Lines form Biosolids Facilities to	1.0	17-Jul-18	17-Jul-18				17-Jul-18														
A1790	8" Drain Line from MH #5 to MH #9	2.0	10-Jul-18	11-Jul-18				10-Jul-18														
A1800	4" Drain Line from Existing Filter Building	1.0	12-Jul-18	12-Jul-18				12-Jul-18														
A1810	6" Drain Line from SBR to 8" Drain Line	0.5	12-Jul-18	12-Jul-18				12-Jul-18														
A1820	6" Drain Line from Headworks to MH #9	1.0	16-Jul-18	16-Jul-18				16-Jul-18														
A1830	12" Drain Line from Tertiary Filters to M	3.0	10-Jul-18	12-Jul-18				10-Jul-18														
A1840	16" Forcemain from Influent Pump Stat	4.0	04-Jul-18	10-Jul-18				04-Jul-18														
A1850	24" Drain Line from UV Disinfection to C	3.0	03-Jul-18	05-Jul-18				03-Jul-18														
A1860	8" Drain Line from MH #4 to CB #11	0.5	23-Jul-18	23-Jul-18				23-Jul-18														
A1950	Reroute 8" Potable Water (PW) Influent	2.0	27-Jun-18	28-Jun-18				27-Jun-18														
A1960	2" PW from Chlorine Contact Basin to B	1.0	04-Jul-18	04-Jul-18				04-Jul-18														
A1970	4" PW from New BFP Location to New f	2.0	02-Jul-18	03-Jul-18				02-Jul-18														
Concrete (Sidewalks, Curbs)																						
A5220	Curbs, Sidewalks	4.0	06-Nov-19	12-Nov-19																		
Grading																						
A1580	Asphalt Removal	2.0	10-Oct-19	14-Oct-19																		
A1590	Culvert Removal and Replacement Entr	2.0	15-Oct-19	16-Oct-19																		
A1610	Concrete Curb Sta 0+00 to 6+90	1.0	17-Oct-19	17-Oct-19																		
A1910	Asphalt Subgrade	1.0	05-Nov-19	05-Nov-19																		
A1920	Asphalt Install	1.0	13-Nov-19	13-Nov-19																		
A1930	Valley Gutter	2.0	06-Nov-19	07-Nov-19																		
A5250	Chain Link Fence	12.0	15-Oct-19	04-Nov-19																		
Sequencing Batch Reactor																						
Excavation																						
A2110	Strip Top 6" Rock	1.0	31-May-18	31-May-18				31-May-18														
A2120	Excavate to Bottom of Subgrade	2.0	04-Jun-18	05-Jun-18				04-Jun-18														
A2130	Rock and Compact Base	1.0	11-Jun-18	11-Jun-18				11-Jun-18														
Concrete Foundation																						
A2150	SBR#1 & SBR#2 Partial Slab Form	1.0	12-Jun-18	12-Jun-18				12-Jun-18														
A2180	SBR#1 & SBR#2 Slab Reinforcing Stee	3.0	13-Jun-18	18-Jun-18				13-Jun-18														
A2190	SBR#1 & SBR#2 Partial Slab Pour	1.0	19-Jun-18	19-Jun-18				19-Jun-18														
A2200	SBR#1 & SBR#2 Partial Slab Cure *Cor	5.0	25-Jun-18	02-Jul-18				25-Jun-18														
A2210	SBR#3 & SBR#4 Partial Slab Form	2.0	03-Jul-18	04-Jul-18				03-Jul-18														
A2220	SBR#3 & SBR#4 Slab Reinforcing Stee	3.0	19-Jun-18	21-Jun-18				19-Jun-18														
A2230	SBR#3 & SBR#4 Partial Slab Pour	1.0	05-Jul-18	05-Jul-18				05-Jul-18														
A2240	SBR#3 & SBR#4 Partial Slab Cure *Cor	5.0	09-Jul-18	16-Jul-18				09-Jul-18														
A2250	SBR#1 & SBR#2 Partial Slab #2 Form	2.0	17-Jul-18	18-Jul-18				17-Jul-18														
A2270	SBR#1 & SBR#2 Partial Slab #2 Pour	1.0	19-Jul-18	19-Jul-18				19-Jul-18														
A2280	SBR#1 & SBR#2 Partial Slab #2 Cure *t	5.0	23-Jul-18	30-Jul-18				23-Jul-18														
A2290	SBR#3 & SBR#4 Partial Slab #2 Form	2.0	31-Jul-18	01-Aug-18				31-Jul-18														
A2310	SBR#3 & SBR#4 Partial Slab #2 Pour	1.0	02-Aug-18	02-Aug-18				02-Aug-18														
A2320	SBR#3 & SBR#4 Partial Slab #2 Cure *t	5.0	06-Aug-18	13-Aug-18				06-Aug-18														

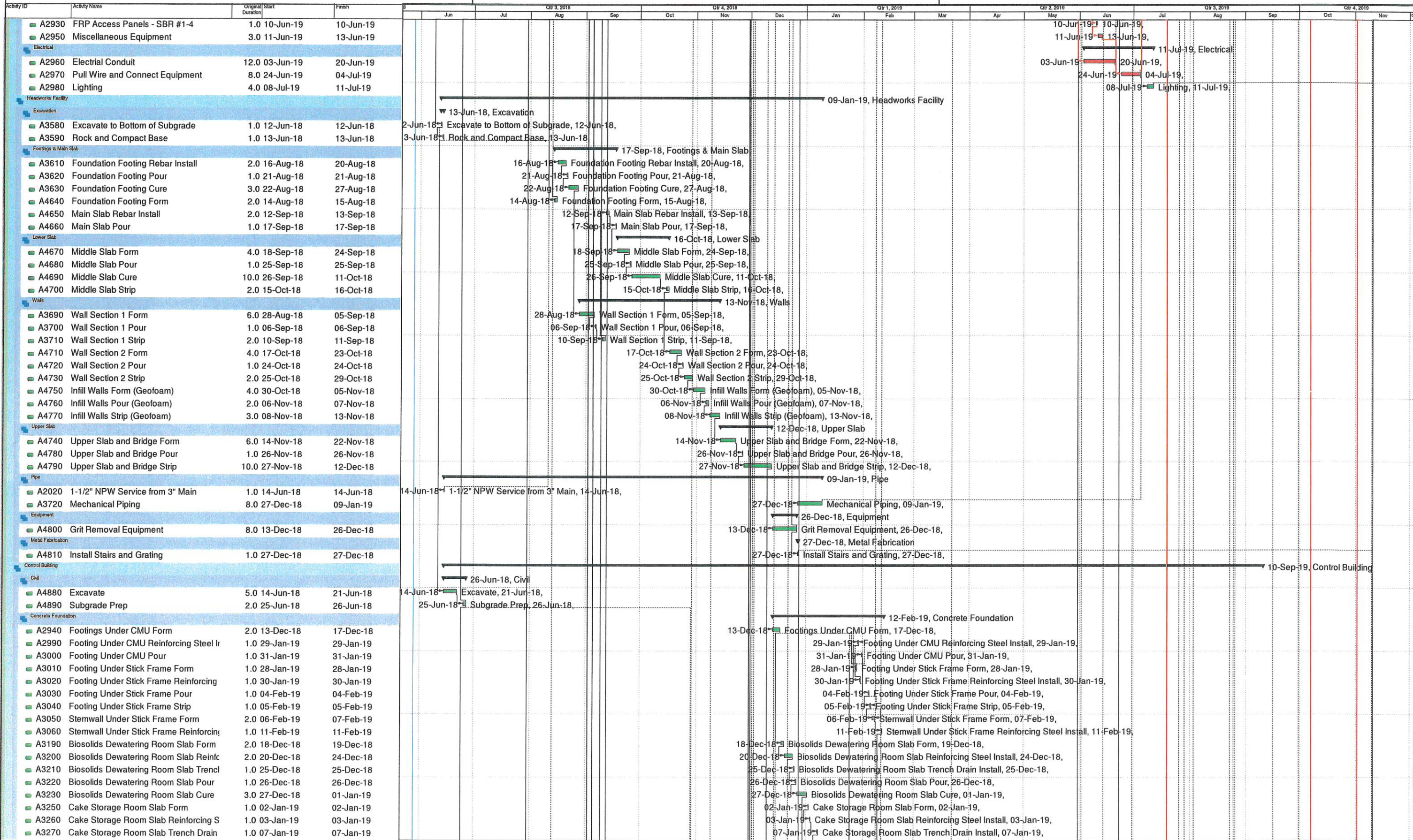
Sutherlin WWTP Improvements

15-May-18



Sutherlin WWTP Improvements

15-May-18



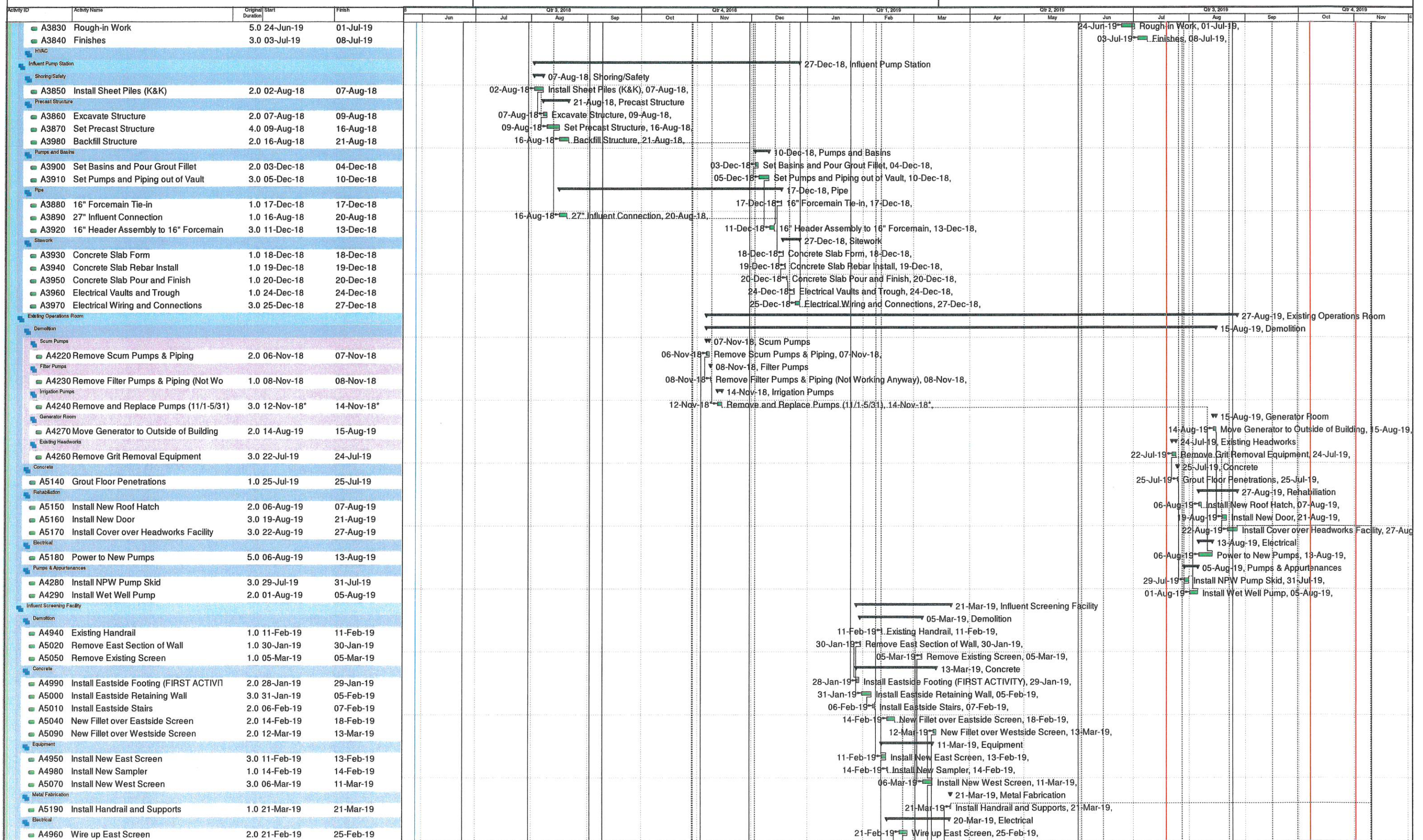
Sutherlin WWTP Improvements

15-May-18



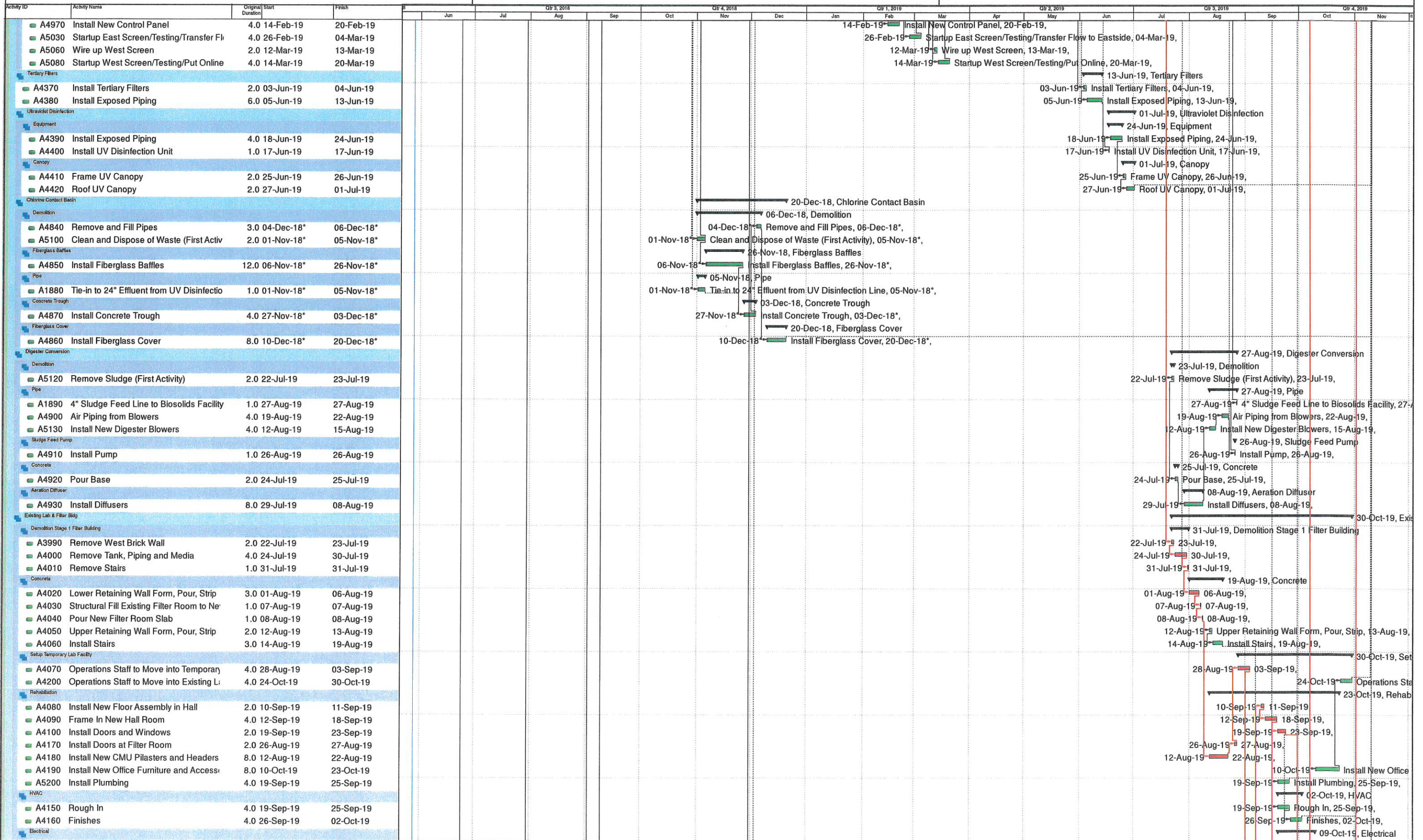
Sutherlin WWTP Improvements

15-May-18



Sutherland WWTP Improvements

15-May-18



Sutherlin WWTP Improvements

15-May-18

